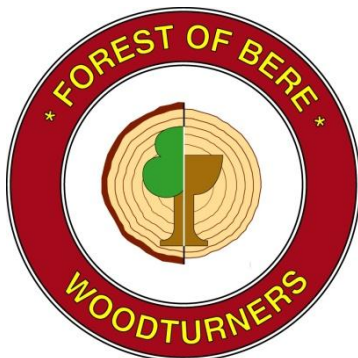


Forest of Bere Woodturners Association



December 2012 Edition

Quarterly Magazine

Contents

Advertisements.....	2	Behind the Scenes Photo Gallery	12/13
Editorial.....	3	Turning an Unusual Shaped Burr	14/15
A Message from the Chairman.....	4/5	David Springett Masterclass.....	16/18
Embroidered Shirts.....	5	Advertisement.....	18
Charities.....	6	Competition Programmes.....	19/20
Saturday Club.....	6	Changes to Competition Structure...	20
Welcome to New Members.....	7	A Necklace Stand.....	21
Advertisement.....	7	Advertisements.....	22/23
Sharpening Tools by Hand.....	8/10	Photo Gallery.....	24/26
Error on the Programme Cards.....	10	Advertisement.....	27
A Revised Colouring System.....	11	Committee Details 2012-2013.....	28
INITIALS Open Day Challenge.....	12		

For All That Your Bathroom Needs



PPS

**Portsmouth
Plumbing
Supplies**



- Affordable Luxury Bathrooms
- Many Displays Over 30 Suites
- Extensive showroom 3,000 sq feet.
- Accessories
- Bathroom Furniture
- Expert Advice
- **FREE DELIVERY**

Waterlooville
023 9226 6662



Open 8am-5pm Mon-Fri Sat 8am-12pm 37 London Road,
Free Delivery Across The South Coast Purbrook

John Davis Woodturning Centre

**The Old Stables, Chilbolton Down Farm,
Stockbridge, Hampshire SO20 6BU**

(3 miles east of Stockbridge on the A30)

Tel **01264 811070**

Open 10.00am –5.00pm Wednesday to Sunday

Brimarc

Chestnut Products

Craft Supplies

Crown Tools

Jet (Axminster)

Meantime Designs

Planet Manufacturing

Robert Sorby

5 Star Adhesives

Tuition by John and other Registered Professional Turners

Regular masterclasses & demo's • Native & Exotic Blanks • Australian Burrs

www.johndaviswoodturning.co.uk

Owned & Managed by a Professional Woodturner for all your turning requirements

Welcome to the Winter edition of our magazine and seasonal greetings one and all.



My workshop tends to get rather cluttered during the winter, there is a lot of timber awaiting a somewhat warmer ambient temperature for preparing and gluing up, the decorating equipment has lost its stowage space to yet more timber, and, equipment and supplies for chickens and bees are also competing for space. I really need, and look forward to, the Spring clean.

We have nine competition opportunities left for this year and also the Open Day Initials Challenge, a varied and interesting selection of projects to stimulate both our woodturning activity and new Chief Judge John Wyatt. The point's structure for the Shield and Cup competitions is being changed so that it should not be necessary to enter a piece every month in order to be in the running for the prize.

In this Issue we have some advice for hand grinding of tools from John Hilton. It does seem that many turners now use and maybe rely on jigs to help sharpen their tools and some very fine work results. Being able and confident to sharpen by hand possibly adds a degree of flexibility, probably saves a little time and provides a certain level of satisfaction. Try the sharpening techniques that John suggests, practicing initially with your grinder switched off and reading from your magazine. A second article from John describes making a necklace stand.

Eric Warnecke sagely reminds us that the workshop environment can be hazardous, Don Smith describes his working of a large burr and Ken Briffett offers his recollection of the David Springett Masterclass. Thankyou to all the contributors including some whose material I was not able to use, and to Ray Matthews and Roy Merritt for their photography. I remind you again that on the website the magazine is in full colour and the photographs can be expanded to reveal the clarity and detail we all desire and, these days, expect.

Rick Smith

Visit the club website, this magazine and back issues are available in full colour PDF format along with much much more.

www.forestofberewoodturners.org.uk

A Message from the Chairman

This is my third Christmas as Chairman and I would like to take this opportunity to WISH YOU AND YOUR FAMILIES A VERY MERRY CHRISTMAS AND A HAPPY NEW YEAR.

Time goes quickly when you are enjoying yourself.



2012 has been a very eventful and busy year with a full and successful programme of visiting Demonstrators (Margaret Garrard, Mark Sanger, Gary Rance, Paul Nesbitt, Steve Daysh) Master-classes (David Springett also Mick Hanbury who did an evening demonstration as well), and thanks must go to our own Club Demonstrators Gary Renouff, John Wyatt, Mike Hazelden and Bill Thorne who stood in for Peter Hurrell at very short notice. My thanks go once again to Don Smith (Vice Chairman), Colin Holman (Treasurer) for keeping a tight rein on our finances, John Webb (Programming), the Committee and you the Members for all your support at Club meetings, 80 – 90 members continue to turn up at Club meetings making the evenings worthwhile. My thanks also go to our helpers namely Eric Warnecke, Peter Withers and John Wyatt (Judges), Jim Casemore for running, updating and cataloguing the Library and Arthur Pike for running the Raffles.

The Club was awarded First Place Rosette at the Surrey Woodturners Open day. In the Open Competition Mike Haselden was 2nd, Kim Rogers 3rd and John Wyatt “Highly Commended”. The turnings they entered were of a very high standard. Well done to all the entrants. Congratulations must go to John Wyatt who gave an excellent Segmented Turning demonstration to the Christchurch Woodturning Club. This was his first demonstration since qualifying through the AWGB as a Demonstrator.

Once again I can only reiterate my comments on the Club Competitions the turned items entered remain at a high standard. Well done to all of you who entered!

The Saturday Club continues to be very successful 19 Beginners and Novices attending. Once again thank you to all the members who have given up their Saturday's to pass on their skills and knowledge. The new programme has been published and sets yet more challenges.

The magazine is being maintained at a high standard, which is down to the efforts of Rick Smith (Editor), Ray Matthews and Roy Merritt (our photographers) and especially to all the contributors. Thank you to Derek Blake who has passed over the duties of Club Secretary, for all his efforts, and we welcome Jim Gilder who has settled into the task and doing it well. The Website is going from strength to strength with over 8,000 hits, thank you to David Hutchings (Webmaster).

Our Christmas Social on 12th December was successful, although a few more members attending would have been appreciated. Bill Thorne and Peter Withers' turning competition was challenging with 15 Ladies and Club members using the Lathes which gave a lot of amusement and entertainment. Disappointingly the gallery competition only received two entries therefore a joint 1st place was awarded to Roy Merritt and Don Smith. A thought provoking quiz was organised by Don Smith. The Raffle, with over 50 prizes, many donated by members, was a great success and the top prize supplied by Jim Gilder, a trip on the Skidpan at Goodwood, was won by Claire Waskett.

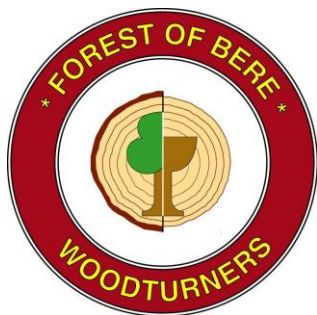
Thank you to Aline and Nikki for running the buffet and to everyone who helped provide extra food.

Well 2013 has a full and busy programme planned and I hope you will support the club as you have done in previous years.

Thank You All!

David Jenkins Chairman

**Bottle Green Polo Shirts and Sweatshirts with FOBWA
embroidered logo and your name**



❖ Polo shirt	£17.86
❖ Sweat shirt	£20.50
❖ Long Sleeved Polo Shirt	£21.10

On your own garment you can have

❖ Club badge embroidered	£6.60
❖ Name embroidered	£2.10
❖ Face shields with brow guard	£10.50

Contact Derek Blake

Prices include VAT at 20%

During 2013 The Forest of Bere Woodturners Association will support

**Macmillan Cancer Support
Hampshire and Isle of Wight Air Ambulance.**

David Jenkins or Don Smith will be pleased to advise you on production issues.

Any items that you would like to donate are acceptable.

Please continue with your generous efforts.

Visit the club website

www.forestofberewoodturners.org.uk

Email Dave Hutchings

webmaster@forestofberewoodturners.org.uk

with your webpage content or enquiries

Saturday Club

A Beginners Class is run once a month, normally a Saturday morning, 9.00am – 1.00pm. The training covers a range of basic woodturning techniques, starting with tool control and sharpening, aiming to help the students become safe, confident and proficient in the art of Woodturning.

Bring your own tools for guidance on sharpening them. There is a £5.00 charge to cover the hire of the hall and refreshments, help with setting up and storing the equipment is appreciated. See the Training and Competition pages at the website for more details.

www.forestofberewoodturners.org.uk

All new members are welcome!

**Saturday
Club Dates**

2013

Jan 12th

Feb 9th

Mar 9th

Apr 13th

June 8th

July 13th

Aug 10th

Sept 14th

Oct 12th

Nov 9th

A Warm Welcome to New Members

On behalf of the club, I would like to welcome two new members since the summer.

Lauren Haines • Philip Argyle

I hope the friendship, the activities and the resources of the club will help you to further enjoy and develop your woodturning.

Your feedback on any aspect of the club will be most welcome.

SIRAS Electrical

FUSE BOARDs • RE-WIRES • KITCHENS & BATHROOMS
LIGHTING (INTERIOR & EXTERIOR) • ADDITIONAL SOCKETS
SOUND SYTEMS • FIRE & BURGLAR ALARMS
RESIDENTIAL & BUSINESS PREMISES
TEST & CERTIFICATION • RCD SAFETY CHECKS
EXCELLENT REPUTATION • REFERENCES AVAILABLE
24 HOUR CALL OUT

07759 697486

www.siras-electrical.co.uk

stuartsturgess@hotmail.co.uk

New regulations state that all electrical circuits in the home, ie lighting and sockets should be protected by an RCD – Residual Current Device to protect against electric shock & other electrical hazards.

Don't Hope It is Safe – Know It is Safe

For a free, no obligation assessment of the electrical circuits & fuse boards in your home please call

Stuart on 07759 697486

Sharpening Turning Tools by Hand

The grey grind wheels can tend to clog and become 'blunt' thus they will occasionally need to be cleaned and straightened up with a devil stone or other wheel dresser. The white wheels will not necessarily require this attention, they tend to wear away rather than collect debris. **Check the condition of the wheels regularly for any sign of damage or uneven wear, ensure the spark guard is clean and secure and always wear fully enclosed safety goggles when grinding.** Keep a container of water handy especially for carbon steel tools, over heating will affect the temper of the steel. For anything but a short touch up on the wheel I dip the tool into water before starting to help keep the tool cool and then re-dip as necessary. If the angle of grind needs to be formed or altered, use the courser wheel initially to get the shape and remember the sparks created while grinding are hot, the metal dust created is flammable, as is the surrounding wood dust, so for safety keep the area clean.



The length of the blade, position of the tool rest, size of the grind wheel and the required angle of grind, will all effect the position in which the tool to be sharpened is held. For sharpening all tools, I prefer to use the tool rest to support my hand and my hand to support the tool. This gives greater flexibility and control. Use the full width of the wheel whenever possible.



The Roughing Out Gouge is probably the easiest tool to sharpen. The handle can remain against the body for support, throughout the operation, which helps to get an even grind. Proceed by lightly touching the bottom of the bevel, furthest from the cutting edge, onto the wheel and slowly lift the handle until the full bevel is touching.



Maintain the tool at this angle and slowly rotate it clockwise and anti-clockwise, using a continuous flowing movement to grind square across the end of the tool until the whole edge is sharpened, at this stage the sparks will be running fairly evenly down the flute.

Spindle Gouge Present the spindle gouge to the wheel, flute uppermost, and have the full bevel touching. If the tool is just rotated, the blade will become very pointed. As you twist the flute to one side, lift the blade slightly – drop it on the way back - and repeat the same to the other side. Keep this movement to the middle third of the cutting edge. The tip of the tool should now be sharp and curved.



Next, as in the photos, one wing at a time, twist the gouge so that a wing is sharpened, lifting the blade up the wheel as you do so. The flute will be looking sideways when the tool is at maximum twist.



Skew chisel The tool must also be held so the cutting edge is horizontal across the wheel. This means the handle will be out to the left for the grind on one side and the right for the other.



The grind wheels are not always true and often it is necessary, especially with the white wheels, to keep moving the skew sideways, at least for the width of the blade, and back again. The angle of presentation must stay the same throughout. I generally change hands as I turn the skew over. I have not done so here in order to facilitate taking the photograph.

Scrapers Set the rest to the appropriate angle and lay the tool flat on the rest. Use one hand to keep the tool flat on the rest, and the other to hold the end of the handle. For rounded tools swing the end of the handle round so that all of the scraping edge touches the wheel in turn.



Sharpening Turning Tools by Hand cont'd

For square tools, the presentation is the same but the movement is a slide from side to side, keeping the tool square to the wheel at all times. The reason for this movement with square scrapers is to prevent the tool forming a low spot or groove in the wheel, and to make sure high spots on the wheel do not mis-shape the tool. If you have noticed, you will realise that I keep my tool rest at the angle for this operation.

Bowl gouge Various grinds are used from the round end to the long grind. The angle and length of the grind depends upon the intended use for the gouge and the preference of the turner. A grind towards the middle of these extremes is generally used, certainly to start with. Commence in a similar fashion to the spindle gouge with the flute uppermost to sharpen the central portion. Then, one wing at a time, roll the tool over to one side and as you do so run the blade slightly up the wheel and away from the flute, keeping the hand on the tool rest steady, this movement can be achieved by movement of the handle. Practice to complete it as one continuous and flowing movement. To get a longer grind more movement of the gouge is needed. The handle will tend to move round towards being at a right angle to the wheel with the flute almost looking straight up.

Take every opportunity to closely observe the tools of demonstrators. Sharp, well-formed cutting edges are not so difficult to achieve and will greatly enhance your woodturning.

John Hilton

Error on Programme Cards

The green programme cards are prepared as three columns across an A4 card and then cut into the almost DL or Brochure card size. As one third of members may have noticed the date for the December 2012 meeting and demonstration by Nikos Siragas was incorrectly entered as December 21st on the third column.

Apologies are offered for this mistake and hopefully no members will turn up on Friday for this meeting!

There are two more adjustments to the 2013 programme, the Masterclass on April 24th will move to the more normal Saturday, 27th April, and the date for the Open Weekend is likely to be changed, if confirmed it will be announced on the website and at the monthly meetings.

Thank you for your forbearance.

Editor

A Revised Colouring System

A number of thoughts have recently crossed my mind, how to be mindful of “ Elf and Safety” with a little humour, and the opportunity to say “I told you so”. These words are intended to be friendly reminders, the thoughts, not necessarily the actions, are to remind ourselves of what we are actually doing.

Most of us, when changing from one turning tool to another, place the tool on the lathe bench under the tool bars, from where with a bit of vibration it might fall to the deck (the floor), like buttered bread sharp end downwards, where our sandalled or trainer shod feet are waiting to stop the sharp end spoiling itself on the concrete floor. Great news. Our first touch of red!

Where to find a suitable stowage or ready use position for the revolving centre? That’s it, keep it to hand in the tailstock! The advantage of this method being that it is easy to find, especially if you are in a hurry to use it. But with your elbow? It is inclined to hurt a little, however the red stuff is almost ready to use!

Granny once said to me ” Never put anything in your ear smaller than your elbow” The same principle applies to not wrapping anything round your fingers, for example cloth or emery grits and then inserting your wrapped up finger inside a small(ish) rotating hole. The chances of it catching or otherwise snagging inside the work are high. This could result either in burning or worse lead to seriously tearing the flesh of your finger. Good potential for more red stuff. While this comment is to remind ourselves about small rotating holes, one is advised to never wrap ANYTHING round your finger or elbow.

Another trick for red stuff is to use an unhandled file. It is not unheard of for the tang of the file to slip from ones grasp and dig a hole in the wrist just behind the thumb very close to the pulse point of the wrist. Ugh again.!

A couple of times recently I have been asked why so often Demonstrators make a point of saying “ Do not change the position of the tool rest while the lathe is turning”. I suggest that most of us have done this and been lucky that nothing serious has happened. However, Be Warned. It can be nasty!

The point of discussing these colouring ideas is to remind ourselves, **always be aware of what we are doing.**

I have a different problem. My blood is blue !!!!!!!

Happy Christmas and New Year to everyone

Eric Warnecke

INITIALS Open Day Challenge for 2013

Similar to the KISS 2012 project the idea is to have a title and a turning combination to amuse, amaze, or puzzle the viewer.

Select from a series of words that start with two of your own initials, a title that forms the name and a starting point for a piece of turned work. If your initials are, for example, T.W. the title of your piece could be Turned Wood or Three Woods ... however this seems a little obvious. Two Wrongs could trigger a more interesting thought process.

It is useful to trawl through the dictionary or scrabble book and write down a list of words that seem to apply, then select the few combinations that seem to work. One of these word combinations will then come into focus with a possible turning solution. As an example, selecting from the T.W. initial list, shown below, Tentacled Weirdness could apply to the series of sea creatures by Kim Rogers (if his name were Tom White!) ... similarly Technically Way-out could refer to pieces which show a great degree of ingenuity and skill, as in the work of David Marsh (if his name was Tim Ward).

However Kim and David have their own challenge in KR and DM

Examples of T and W words from the dictionary

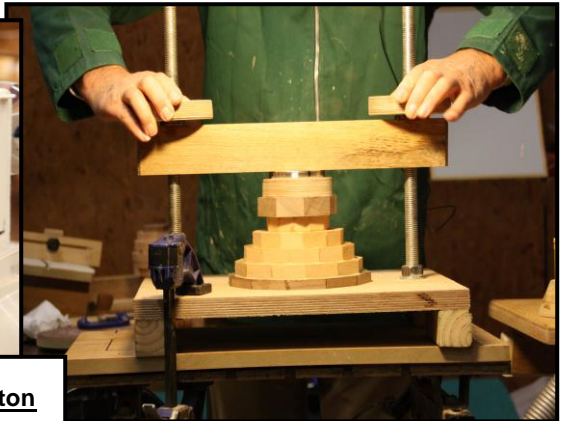
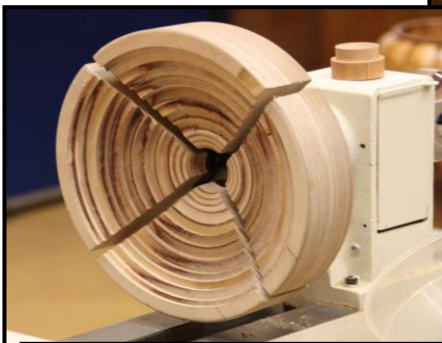
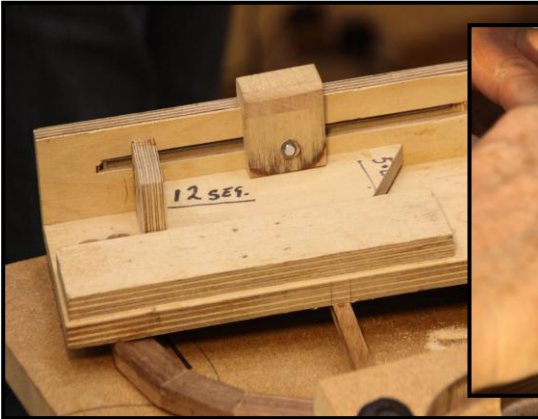
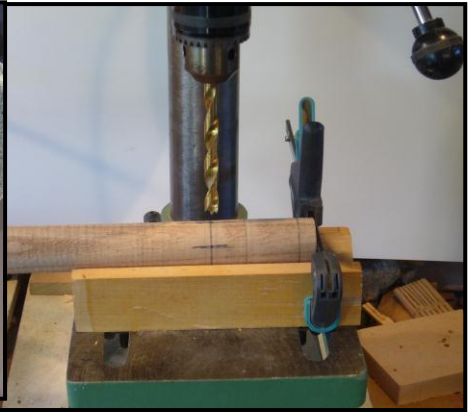
Technical	Wavy
Tectonic	Way-out
Tedious	Waspish
Telescopic	Waveform
Tentacled	Weird(ness)
Tenuous	Wonky
Topographic	Wormed
Toroidal	Woven
Translucent	Writhing

Ken Briffet

Behind the Scenes Photo Gallery

At the top left from John Hilton, a simple arrangement to accurately lock and divide the spindle in this case, into five, and right securely mounting it for drilling. At centre left and right from John Wyatt, a jig to consistently finish the segmented blocks, below right a serious clamping jig and left a wonderful set of wooden jaws.

Behind the Scenes Photo Gallery



Photos top left and right John Hilton

Bottom four photos by Roy Merritt

Turning an unusual shaped Burr



About six months ago I was given a very unusual shaped Burr which is shown in the photo on the left. My first thoughts were what can I do with it and after much thought decided to try and turn three bowls from it.

The height of the Burr was originally 30 inches but I reduced it by 9 inches so that it could be photographed. Once this had been done I cut the blank again giving me three blanks for turning.

I decided that the best way to secure this to the lathe was by using my chuck and therefore a 2 inch hole needed to be drilled in the middle of the burr side. Using a one inch flat chisel I was able to flatten off an area big enough to clear the jaws of the chuck and to allow the blank to sit square, but also to make certain that the Forstner bit would not skip around.

Photo on the right shows the hole drilled in the Burr side of the blank.

The blank was then mounted on the lathe as in the photo below, as you can see it is an unusual shape.

Making sure that everything was tight and that the tool rest was clear of the revolving piece I set about turning the base of the bowl.



Setting my lathe at 350rpm I started turning from the centre outwards shaping the bowl as I went. Owing to the odd shape there was a lot of bounce and therefore a lot of care was needed as I proceeded with turning the shape and getting it down to a flat base for the reverse chucking point.



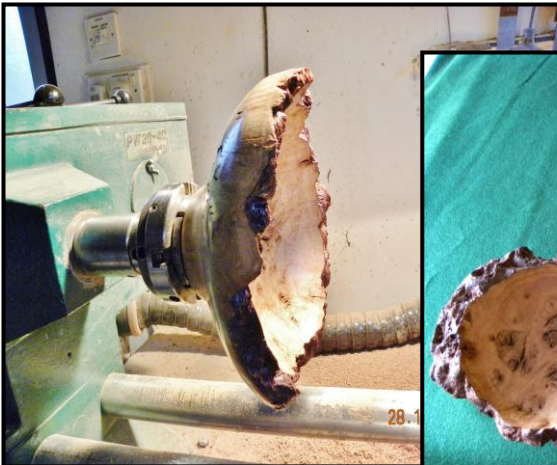


Photo on the left shows the part turned blank. Once the chucking point was achieved I continued to turn the shape and finish by sanding and polishing. Photo below shows the completed underside.

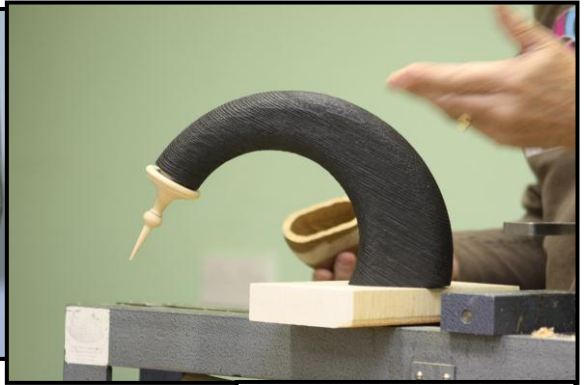
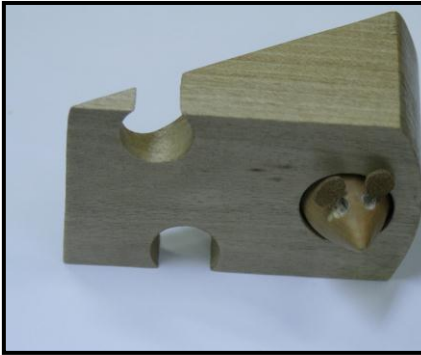
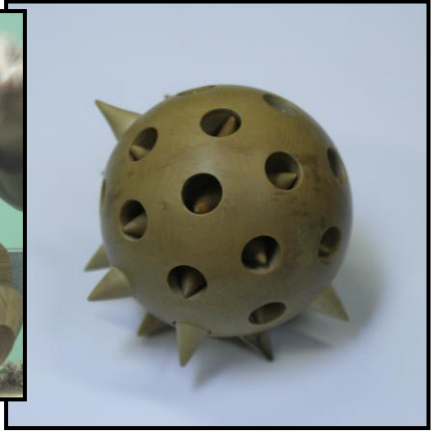
The blank was reversed on the chuck ready for turning the internal part of the bowl, after checking again it was securely held and clear of the tool rest when rotated by hand I proceeded to turn the bowl to its finish.



The photo below left shows the finished article still mounted on the lathe. The photo on the right shows the three bowls that I managed to turn from that 30 inch long piece of burr. The bowl sizes are: - Bottom left 8 x 2 ½ ins. (200 x 63 mm), Centre 9 x 3 ½ ins. (230 x 88mm) & Bottom right 8 ½ x 2 1/2 ins. (215 x 63mm).



Don Smith



Photos by Roy Merritt



It was a pleasure to welcome back David and Christine for a Masterclass that we had looked forward to since it was announced.

As a tribute to David's creativity and enthusiasm, several members of the club brought in pieces which they had made for the June 2012 monthly competition, titled "A David Springett inspired piece". David enthused at the range of entries and was particularly pleased to see the way that John Smith and David Marsh had extended the basic concept by using alternative materials and processes.

During the course of the day David covered so much interesting ground that it is difficult to condense it into a short statement. A whole range of techniques were demonstrated in a methodical; logical and enthusiastic way. This left most members stimulated, and a few stunned. When at the lathe, all his movements and cuts are considered while the gentle use of his tools means they are not stressed.

David's approach to the use of plank wood off-cuts allows him to explore a range of shapes and processes in a less regimented way than traditional segmented turning. These methods open up new possibilities and David is keen to see how other turners respond

Worth noting are a few tips mentioned during the day

- The use of Cobalt steel bar and rod for tool making
- Typex as a depth marker on cutting tools
- Double Sided Carpet tape, for work holding which needs to be removed after a short interval
- "Sticky Stuff" to remove tape and residue
- Hot melt glue for tacking work to faceplate
- Builders foam and clingfilm for moulding specialised jigs to hold work on the lathe
- Turning things to fit – preferably without too much measuring
- Making use of a flat tool rest for control and support when turning lattice work
- When tacking a piece with hot melt glue onto a jig or wood faceplate, put both pieces into a microwave for 10 seconds. The same applies when separating, but beware a longer time will cause penetration of the glue into the surfaces
- Glue and paper joints are ideal for split turnings and easily separated
- Use an appropriate coloured background to the lathe when "cutting air." and wood
- Make good use of self-made jigs

Every turner looking for something other than traditional forms should have a copy of "Woodturning Evolution" by Nick Agar and David Springett. For those turners geometrically inclined "Woodturning Full Circle" is a must.

A great day, well done to David, and to his wife for her support with the fascinating display table.

Thanks must also go to those that made the day possible.

Ken Briffett

Shane Stoddart

Kitchens & Carpentry

- Kitchen specialist
- Solid wood and SSV worktops
- Design and planning service
- Bathrooms
- Built-in wardrobes
- Tiling
- Household Carpentry
- Decking
- Fencing

Specialising in kitchens, with well over 100 to my name, I offer the complete fitting service.

I have fitted kitchens for all of the big companies and I offer the same high standard and guarantees they do with the friendly one to one service they cannot.

I can beat most installation quotes saving you £1000's in overpriced works.

With a design background, I can also advise on getting your dream installation.

And much more

A good kitchen is in the Design

A great kitchen is in the Fitting

Telephone • 07912 654 278

Email: shanestoddart@hotmail.co.uk

COMPETITION PROGRAMMES 2012/2013

Meeting	Beginner
16 Jan 2013	Matching shaped Light pull and Bud Vase
20 Feb 2013	Sweet bowl the largest diameter you can turn comfortably on your lathe, state on your entry the swing over your lathe bed
20 Mar 2013	Design and turn your own candlestick incorporating both faceplate and spindle turning
17 Apr 2013	Sewing Needle Case a drawing will be supplied as a guide
15 May 2013	Lidded box with a plain lid
19 Jun 2013	One apple and one pear
17 Jul 2013	Egg & egg cup
21 Aug 2013	Piece as demonstrated by Paul Nesbitt at July meeting
18 Sep 2013	Piece to show off your turning abilities
Novice	
16 Jan 2013	Wooden Bowl minimum size 200 x 50 (8" x 2")
20 Feb 2013	Sherry Schooner
20 Mar 2013	6 mug capacity mug tree
17 Apr 2013	Sewing Needle Case research the Internet 'Victorian needle cases'
15 May 2013	4 matching egg cups on a stand with a central column
19 Jun 2013	Single tier Ear ring stand
17 Jul 2013	Pot Pourri with a wooden finial lid
21 Aug 2013	Piece as demonstrated by Paul Nesbitt at July meeting
18 Sep 2013	Piece to show off your turning abilities
Intermediate	
16 Jan 2013	Wooden Bowl with foot depth inside bowl 50mm (2")
20 Feb 2013	Finial Box a drawing will be supplied as a guide
20 Mar 2013	Gavel and Block
17 Apr 2013	Darning mushroom incorporating a sewing needle case in the handle
15 May 2013	4 matching egg cups on a stand with a central column
19 Jun 2013	2 Tier ear ring stand
17 Jul 2013	Pot Pourri with a wooden finial lid
21 Aug 2013	Piece as demonstrated by Paul Nesbitt at July meeting
18 Sep 2013	Piece to show off your turning abilities

COMPETITION PROGRAMMES 2012/2013

Advanced

16 Jan 2013	Fruit bowl with 6 mixed fruit
20 Feb 2013	3 legged stool with decorative legs drawing supplied if required
20 Mar 2013	Pestle and mortar
17 Apr 2013	Involute turned table lamp
15 May 2013	Vertically staved biscuit barrel
19 Jun 2013	Secret Box to your own design
17 Jul 2013	Scalloped rim vase 203mm - 230mm (8" - 9") tall
21 Aug 2013	Piece as demonstrated by Paul Nesbitt at July meeting
18 Sep 2013	Piece to show off your turning abilities

Changes to Cup Competition Structure

The following points structure will be used in future to determine the Shield and Cup Competition winners.

- Entrants for each group who enter all 12 months will have the 10 highest scores counted. This will enable those who can only enter 10 times or less a chance to challenge for the Cup.
- For each group, to be eligible for entry into the Cup Competition a minimum of 3 members from that group must have entered at least 6 times. This rule only applies to the Cup Competition. All entries will still be considered to the Group Competitions.
- Novice, Intermediate and Advanced turners will compete against each other for the Woodturner of the Year Cup and the Don Smith Challenge Cup.
- The Beginners group have their own group Shield Competition which will be awarded to the best Beginner over the 12 months.

Don Smith

A Necklace Stand

The base is held by friction hold and a dovetail formed on the top side. This hold is only suitable for small pieces of wood – not much larger than the faceplate or chuck they are pressed against. Hold by this dovetail and complete the underside of the base, incorporating a holding dovetail. Reverse work and complete the top of the base.



Set the stem between centres, true up and mark the positions for the arms. Transfer the work to a pillar drill and drill the holes to take the arms. Drill to the centre of the stem only. Return the work to the lathe and shape to finish. Lastly, form the arms. Before the arms are glued into place, the stem is returned to the lathe and the top completed.

John Hilton

Wireless & Home Networking



BROADBAND ROUTER & 1 PC SETUP	£35
EACH ADDITIONAL PC	£5

Please note: Above are labour charges only, equipment supplied will be subject to survey and will be an additional cost.

Wireless networking is the cheapest and most effective way to connect all of your computers to the internet, share files and printers.

Innovation are leading experts in this field, able to:

Survey, making sure you get the right equipment

Install, all wireless equipment quickly and professionally

Secure, from anyone attempting to hack your wireless link

Call us now, for a fast professional and friendly service!



07979 052 296

Innovation IT Services, 9 Avon Court, Crombie Close, Waterlooville, Hampshire, PO8 8NE

Computer Repairs



PC BROKEN ?

Full Diagnostic only £35

DATA RECOVERY

Data Recovery from £40

**RUNNING SLOW, GOT
A VIRUS?**

Full System Reload from £50

TAYLOR MADE PC

From as little as £200

NEED ADVICE?

Call us, its Free!

Fast, professional and friendly service. Full workshop facilities available. Simply give us a call, we will collect your computer and return it fixed; usually within 48 hours

Broadband & Wireless Networking starting from £35



07979 052 296

Innovation IT Services, 9 Avon Court, Crombie Close, Waterlooville, Hampshire, PO8 8NE

Photo Gallery



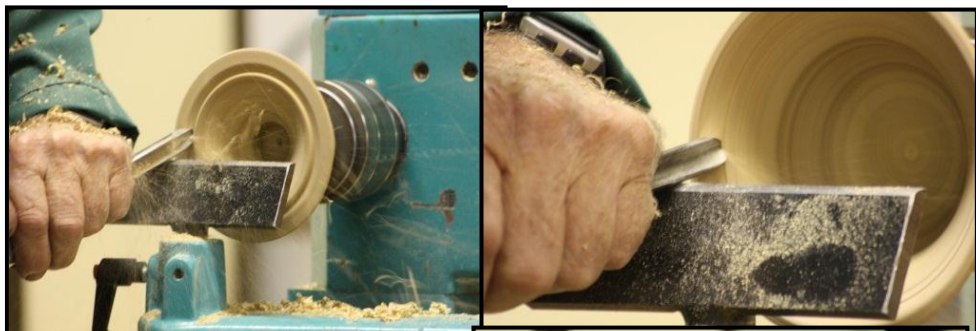
Top and Centre Right

Decoration by Steve Daysh

The other four pieces by our club members

Photos by Ray Matthews

Photo Gallery

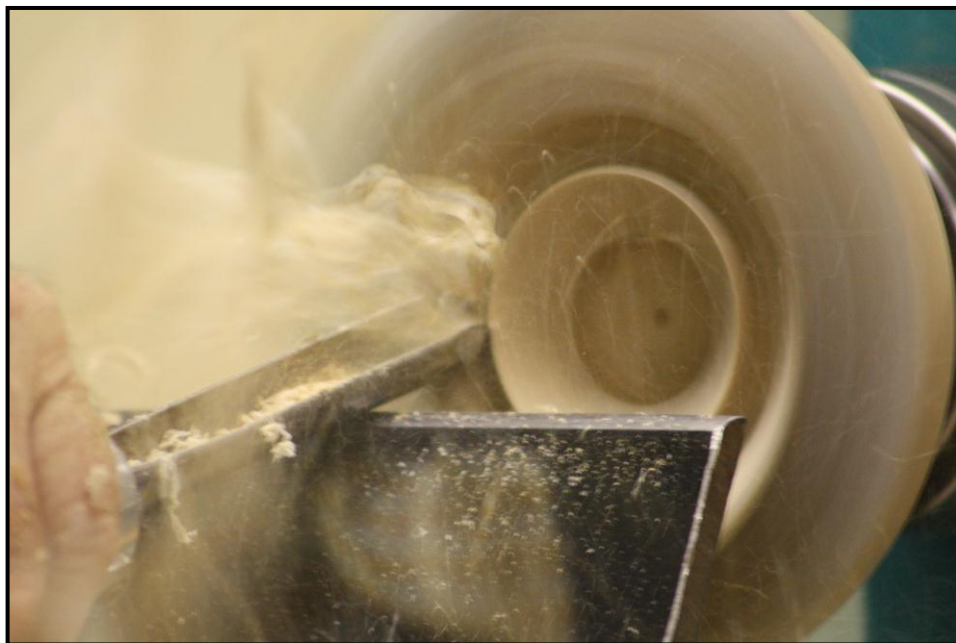


Above six photos and page 26

Focus on the tool, its shape, its grind and presentation to the work. Note the thinner the wall the finer the cut.

Left Focus on Bill, ever helpful, demonstrating at short notice at the November club night.

Photos by Roy Merritt



Focus on the tool, its shape, its grind and presentation to the work.

If you are planning a project take out some time, if you can, to record your progress. It is relatively easy these days to take good quality photographs, combine these with some relevant notes and there is your article.

If you find a project interesting and challenging so will other members.

Artyzan



PRINT SOLUTIONS

Broadmarsh Business Centre
45 Harts Farm Way
Havant
PO9 1HS
02392 449708

W.L.West & Sons Ltd

est 1865

Sawmillers & Timber Merchants

Temperate & Tropical Hardwoods
Hardwood floors supplied and installed.
Bespoke hardwood worktops.
Gate and Fencing contractors
Machining facilities for the carpentry & joinery
industry.

Smaller User & Enthusiast Shop

European & Exotic hardwoods • Australian Burrs •
Woodturning blanks • Carving timber • Tools &
finishes by Sorby • Crown Tools • Ashley Iles
Chestnut • Accessories by Craft Supplies
Ideal for DIY, Turning & carving enthusiasts

Shop Email: shop@wlwest.co.uk

Shop open: Mon-Fri 8am'til 5.

Sat 9.00 am-1.00pm

Find us half way between Midhurst & Petworth just off of the A272
opposite the Half Way Bridge Inn

Selham, Petworth, GU28 0PJ

t: 01798 861611

f: 01798 861633

sales@wlwest.co.uk www.wlwest.co.uk

The Forest of Bere Woodturners Association

Committee			2012 - 2013
Chairman	David Jenkins	davidjenkins1@ntlworld.com	023 92265551
Vice Chairman	Don Smith	d.smith2@donaline2004.plus.com	023 92473528
Secretary	Derek Blake	derek.blake57@ntlworld.com	02392 692926
Treasurer	Colin Holman	colinholman@live.co.uk	02392 593011
Magazine Editor	Rick Smith	ricksmith@tiscali.co.uk	02392 526637
Web Master	Dave Hutchings	daveandpaulineh@o2.co.uk	02392 385385
Prog. Organiser	John Webb	j.n.webb1935@uwclub.net	01329 311744
Member	Bill Thorne	bill.thorne2@virgin.net	01243 672992
Member	Arthur Pike	arthurpike@btinternet.com	02392 263016
Member	John Wyatt	johnwendywyatt@gmail.com	01730 812700

Helpers

Chief Judge	John Wyatt helped by Eric Warnecke
Library and Badges	Jim Casemore
Club Night Teas	Volunteers on the night
Raffle	Arthur Pike

Meetings

The club meets on the Third Wednesday of the Month at The St. John Ambulance Hall, Fraser Road, Bedhampton, Havant, Hants. PO9 3EJ (Opposite the Rugby Club) 1915 till 22.00hrs.

Disclaimer

Entries in this publication are the opinions of the contributor and are not necessarily approved or endorsed by either the Editor or the Officers of the Club.